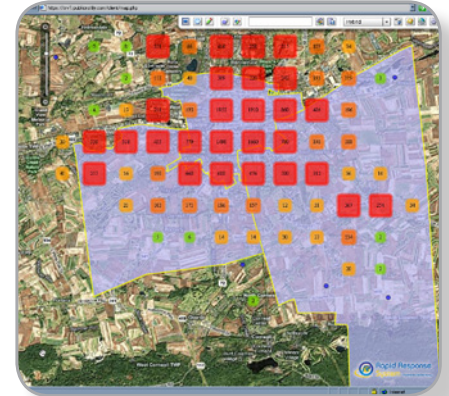


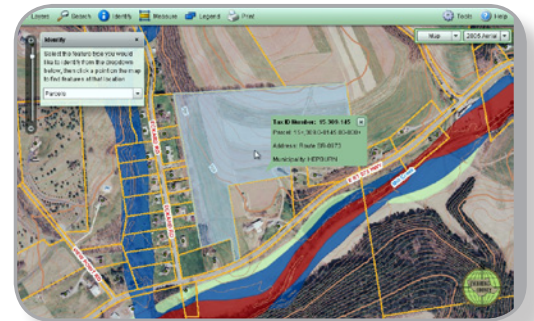
Rapid Response Successfully Deployed in Lebanon, Pa.

The Lebanon, Pa., water system, maintained by the City of Lebanon Authority (CoLA), serves more than 57,000 people through more than 19,000 residential and commercial service connections. On Dec. 21, 2010, the city experienced a break on a 30-inch water main at Coleman Park, which prompted an immediate boil water advisory for more than 10,000 accounts. GeoDecisions' Rapid Response system was deployed, using its new web mapping interface, to notify the public of the alert. "The mapping interface worked great," said Jonathan R. Beers, executive director at CoLA. "Simplicity is the key, and Rapid Response made it is easy to do these alerts."



A Floodplain Internet Mapping Solution for Lycoming County

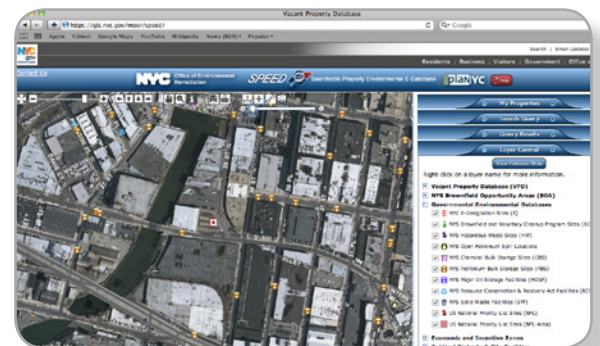
The GIS for Lycoming County, Pa., supports a wide range of applications and services. In December 2010, it added a publicly available Internet mapping portal. GeoDecisions provided the ArcGIS® Server Flex API solution to enable greater efficiency, productivity, and decision making capabilities at all levels of county administration and operations and to provide the public with ready access to information. "We are excited to launch this new website for public access to detailed floodplain mapping," said Fran Jones, supervisor of GIS at Lycoming County. "This website will be a useful tool as we begin our newest flood mapping project, Risk Map."



SPEED Portal Honored by ACEC/PA

In New York City, thousands of vacant buildings and properties are poised for redevelopment. To make it easier to research these sites and identify potential environmental cleanup and brownfield redevelopment opportunities, the Mayor's Office of Environmental Remediation teamed with GeoDecisions to develop the Searchable Property Environmental E-Database (SPEED).

SPEED is a first-of-its-kind technology application for New York City. It enables city employees and the public to view, query, and generate reports on historic environmental and cartographic data and offers a visual display of properties in one central location. The portal was recently honored with a diamond certificate in the American Council of Engineering Companies of Pennsylvania (ACEC/PA) Diamond Awards for Engineering Excellence.





On June 10, 1986, a handful of faculty associated with the Office for Remote Sensing of Earth's Resources at The Pennsylvania State University (Penn State) formed GeoDecisions, Inc. With only a few employees, the company focused on geographic information systems (GIS),

mapping, and data analysis for local and state governments.

Throughout the years, GeoDecisions has grown from its humble beginnings to become an award-winning, international firm with more than 150 employees in 15 offices worldwide. Although the technology in which we work has changed during the past 25 years, one thing has never changed, our dedication and commitment to you, our valued clients, partners, and colleagues.

As 2011 begins, I am proud to share in the celebration of GeoDecisions' 25th anniversary of providing innovative GIS services and solutions with all of our talented staff and industry friends. We look forward to the next 25 years of prosperity and mutual growth.

Sincerely,

Anthony J. Pietropola
President, GeoDecisions

IRRIS Featured in CWID Fact Sheet



In 2006, IRRIS was praised as a "Top 10 Technology" by the Coalition Warrior Interoperability Demonstration (CWID). Today, CWID continues to recognize the value of this technology as part of its educational showcases. The Federal Emergency Management Agency's (FEMA's) utilization of IRRIS® for terrorism preparedness exercises is highlighted in CWID's Fact Sheet. Speaking to its effectiveness, CWID states: "The use of IRRIS helped FEMA decision makers visualize and comprehend activities taking place in response to the disaster scenario." CWID consists of five main U.S. network locations and more than 20 coalition partners around the world working to improve information sharing.

Offices Relocate

Two GeoDecisions offices have moved to new office spaces in an effort to better serve their clients. The Hampton Roads regional office located in Suffolk, Va., relocated from Newport News, Va., and the Austin, Texas, regional office moved into its new office space. Both offices will continue to deliver strategic GIS, intelligent transportation systems (ITS), and information technology (IT) solutions to empower defense, homeland security, transportation, state, county, municipal, and commercial clients to make smarter, more-informed decisions.

Staff News & Notes

Welcome to Our Team

Robert Metzger - Application Developer

Andre S. Davis - Application Developer

Mandeep Kaur - Application Developer

Natallia Robinson - Application Developer

