

Message from the President




As spring begins and warmer weather approaches, we are surrounded by examples of growth. Even amidst trying economic times, decision makers are challenged to find

ways to increase growth and contribute to their performance with fewer resources.

Today, geographic information system (GIS) technology is recognized as an essential resource for many organizations, leading to increased productivity, better returns on investment, collaboration, and communication. Often, these organizations are continually challenged to provide cost-effective and efficient services to their customers. Our firm has successfully assisted a variety of agencies, both public and private, with the management of customized systems and the vast amount of information associated with them.

As the country begins rebuilding its infrastructure, we are poised to design creative and original solutions that not only satisfy immediate needs, but provide a technological foundation that will offer long-term benefits. In this issue, we'll explore some of these innovative solutions.

Sincerely,



Anthony Pietropola
President, GeoDecisions

San Diego's Emergency Services and Public Safety Initiative



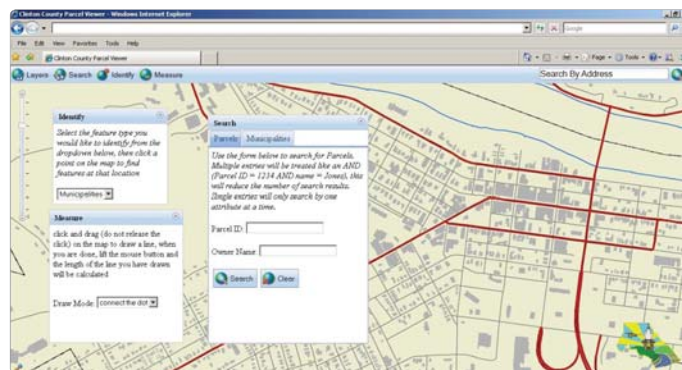
SAN DIEGO STATE UNIVERSITY

The San Diego State University Research Foundation recently awarded GeoDecisions a contract to develop the San Diego Regional Emergency Geospatial Information Network (SDREGIN). The goal of SDREGIN is to provide a secure spatial data architecture supporting the San Diego metropolitan region's diverse emergency services and public safety agencies. As part of the project, GeoDecisions will complete a strategic plan, enterprise spatial data model crossing domains, spatial data integration strategies, and an integration pilot project. When complete, coordinating agencies will be able to share information pertaining to critical infrastructure and resources in support of emergency management operations.

ArcGIS® Server Web Site for Clinton County

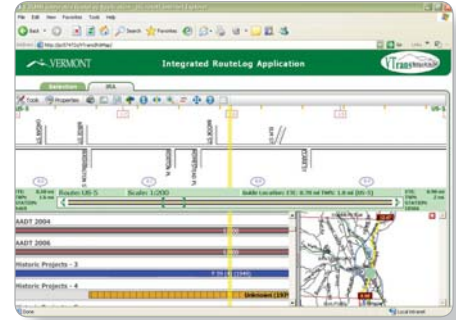
GeoDecisions was selected by Clinton County, Pa., to develop an ArcGIS Server public mapping Web site. The county's GIS supports a wide range of applications and services, including public safety, transportation, utilities infrastructure, tax assessment, economic and land use planning, developmental activities, schools, and management of data related to engineering purposes.

The site will be developed using the latest development tools, including JavaScript™ API, to produce a highly cartographic and user-friendly application. As a result, having key information available through the Web will allow the public to gain ready-access to critical information.



Seeing the Road Easier at VTrans

GeoDecisions completed Phase 2 enhancements to the Integrated RouteLog Application (IRA) for the Vermont Agency of Transportation (VTrans). This is the initial “second generation” straight line diagram (SLD) implementation that GeoDecisions developed. The IRA application successfully accesses and integrates disparate data from multiple sources through a GIS-enabled interface. Features of the enhancements include an integrated “tabbed” Web interface, upgraded interactive mapping capabilities, enhanced tools, links to project plans and inventory photos, and improved output capabilities. In addition, the application was updated to utilize VTrans’ Oracle® data environment.



City of Grandview, Mo., Selects GeoDecisions for GIS Needs Assessment and Strategic Plan

GeoDecisions was selected by the city of Grandview, Mo., to perform a GIS needs assessment and develop a strategic plan. The assessment and plan will provide a guide for streamlining and improving current operations to meet the growing needs of the city’s employees and residents. Additionally, the strategic plan will outline how GIS and information technology (IT) can be integrated into the city’s current information systems, operations, and decision-making processes to support new initiatives and enterprise data management.

GeoDecisions has previously prepared GIS needs assessments and strategic plans for several municipalities, including Hartford, Wis., Reading, Pa., and New Brunswick, N.J.



IRRIS Used for Obama Inauguration

IRRIS’ geo-fencing capability was successfully utilized by the Surface Deployment and Distribution Command (SDDC) Surface Cell Operation Team during the 2009 inauguration of President Barack Obama. IRRIS technology notified SDDC operations of any sensitive shipments that passed through a 50-mile radius of the Washington, D.C., area during the inauguration.

The GeoDecisions Rocks World Tour

Next stop – Oklahoma City, Okla.

GeoDecisions will be in Oklahoma City for the 2009 GIS for Transportation Symposium (GIS-T), from April 5-8. Visit our Web site or stop by booths #15 and #16 while at the show for a complete “set list” of scheduled events and activities. Be sure to visit our main stage for your guitar solo or group jam session!



Staff News & Notes Welcome to Our Team

Robert Shoaff – Urban Planner
Joshua Lowary – Database Analyst



© 2009 GeoDecisions,
A Division of Gannett Fleming, Inc.

Austin, TX · Baltimore, MD · Camp Hill, PA · Harrisburg, PA
Jacksonville, FL · Madison, WI · New York, NY · Newark, DE
Newport News, VA · Philadelphia, PA · Pittsburgh, PA · South Plainfield, NJ
State College, PA · St. Louis, MO · Tampa, FL
www.geodecisions.com



Printed on recycled paper.