



MESSAGE FROM THE PRESIDENT

At GeoDecisions, our internal quality management system is a significant part of our

corporate culture, not just a process we follow to maintain our ISO 9001:2000 certification. We have successfully integrated a continuous quality improvement process, ensuring that our quality management system remains relevant and effective.

Accordingly, this requires commitment from our entire staff. During our most recent surveillance audit, I was pleased to hear that "it is obvious and impressive how the staff understands and operates under an established quality management system" from an auditor.

GeoDecisions is committed to amazing our clients with our responsiveness and innovation and becoming their trusted advisors. I'd like to personally thank our staff for their dedication to quality and our clients for putting their trust in our firm.

**ISO 9001:2000
CERTIFIED**

Sincerely,



Robert M. Scaer, P.E.
President, GeoDecisions

SDDCTEA WINS GEOSPATIAL LEADERSHIP AWARD!

GEOWORLD GEOSPATIAL LEADERSHIP AWARDS 08

SDDCTEA received a 2008 Geospatial Leadership Award for its use of GeoDecisions' IRRIS technology. The Web-based application enables the agency to manage, document, and synchronize the movement of surface cargo transported throughout the world. The award was presented at the annual GeoTec Event on June 3, 2008, in Ottawa, Ontario. Sponsored by *GeoWorld* magazine, the Geospatial Leadership Awards program was created to identify and recognize individuals and organizations for both vision and achievement in the geospatial industry. SDDCTEA accepted the award in the Public Enterprise Award category.

STREAMLINED ELECTRIC UTILITY MANAGEMENT

The South Dakota Public Utilities Commission (SDPUC) contracted GeoDecisions to develop a series of more current, accessible, and manageable electric utility boundary geographic information system (GIS) data. As part of the project, GeoDecisions will digitize utility boundaries from hard copy and legal docket source data, develop an ongoing maintenance plan for SDPUC to maintain the spatial boundary data, and investigate the effort and data needed to improve upon the current accuracy of boundary information. The efficient data will enable SDPUC to better determine outage areas and provide accurate information for utility customers in need of assistance.



STRATEGIC PLAN FOR KDOT



GeoDecisions recently developed a data warehouse strategic plan for the Kansas Department of Transportation (KDOT). The strategic plan provides a guide for planning and budgeting the ongoing development of KDOT's official spatially enabled repository of roadway and business data, including traffic volumes, highway characteristics, accident information, and financial data for construction projects. The plan outlines the process for moving the data warehouse initiative from early production implementation to KDOT's primary production source for reliable and timely information. The strategic plan describes the tasks that are recommended for implementation for the end of fiscal year 2008 through 2012.

DIGGERS HOTLINE GETS DATA ENHANCEMENTS

GeoDecisions completed a GIS translation project for Diggers Hotline, a one-call center for



Wisconsin citizens who are planning to dig, excavate, or disturb soil. Two primary goals were accomplished on this project: updating the Diggers system with more accurate spatial data and establishing a system for acquiring up-to-date and accurate spatial information in the future. The enhancements help to ensure that native data from Wisconsin counties can be easily received, translated, and imported into the Diggers Hotline system.

ALL HAZARDS CONSORTIUM GIS WORKSHOP HIGHLIGHT

GeoDecisions presented its IRRIS technology at the All Hazard Consortium Regional GIS Workshop in Towson, Md. The July 30, 2008, event featured homeland security, emergency management, and GIS leadership from Washington, D.C., Delaware, Maryland, Pennsylvania, North Carolina, New Jersey, New York, West Virginia, and Virginia. The workshop focused on the role of GIS in support of multi-state catastrophic evacuation planning and preparedness. GeoDecisions' Project Manager Sarah Burkett (right) presented IRRIS' multi-state emergency response coordination capabilities during the event.



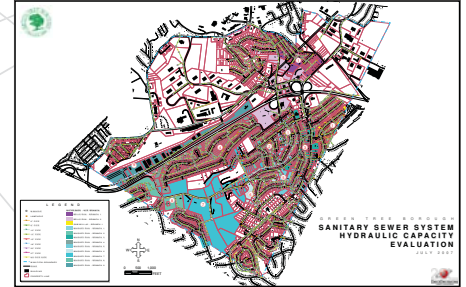
PENNSYLVANIA GIS CONFERENCE HIGHLIGHT

GeoDecisions' Project Manager Kevin Scott (left) works the booth at the conference. During the 16th annual event, the firm delivered a presentation on ArcGIS Server development and participated in an industry educators panel discussion.



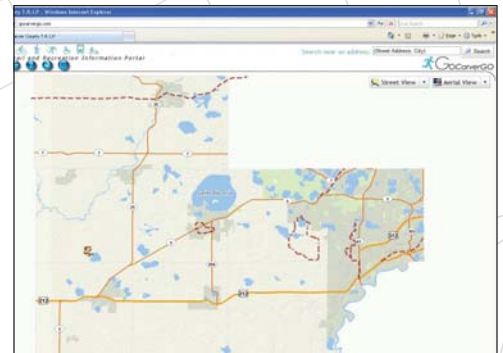
MUNICIPAL MANAGEMENT SOFTWARE FOR GREEN TREE BOROUGH

GeoDecisions developed a municipal management application that assists officials from Green Tree Borough, Pa., in their everyday activities, including creating and deploying custom forms and reports, generating queries for specific mapping functions, updating and creating GIS layers to produce official borough maps for zoning, and viewing road, property, and sanitary sewer maintenance operations. As part of the project, GeoDecisions served as the lead computer and network consultant for the borough and the borough's police department.



CARVER COUNTY TAKES A TRIP

GeoDecisions is teaming with Houston Engineering to develop the Trails and Recreation Information Portal (TRIP), a Web-based mapping application that allows citizens of Carver County, Minn., to locate parks and trails utilizing an interactive GIS. Based on ESRI® ArcGIS® Server 9.3 technology, TRIP is available at gocarvergo.org, a Web site that helps to promote healthy and active living for residents of Carver County.



STAFF NEWS AND NOTES

Welcome to Our Team

John Pylant – Sr. Business Development Manager
Victoria Snyder – IRRIS Trainer
Keith Turner – Systems Administrator



Austin, TX · Baltimore, MD · Camp Hill, PA · Harrisburg, PA
Jacksonville, FL · Madison, WI · New York, NY · Newark, DE
Newport News, VA · Philadelphia, PA · Pittsburgh, PA · South Plainfield, NJ
State College, PA · St. Louis, MO · Tampa, FL

www.geodecisions.com

