

MESSAGE FROM THE PRESIDENT


During this time of year, many of us have friends, colleagues, or family members who have headed back to school. This new school year, GeoDecisions has again partnered with The Harrisburg University of Science and Technology (HU). Since HU welcomed its first class in 2005, GeoDecisions has worked closely with the school to support curriculum development, mentor students, and teach classes. In this way, we have been able to both serve the community and equip students with skills needed to be successful in the field of geospatial technology.



Meredith McNutt

Our involvement with the university has already come full circle, as we hired a member of HU's first graduating class, Meredith McNutt. We are excited to be part of a win/win situation for the community, HU, and GeoDecisions.

Sincerely,



Robert M. Scaer, P.E.
President, GeoDecisions

GEODECISIONS PARTNERS WITH DVRPC

The Delaware Valley Regional Planning Commission (DVRPC) Division of Technical Services selected GeoDecisions to assist with developing and implementing a multi-jurisdiction, linear-referenced road centerline file and several Web-based geospatial applications.



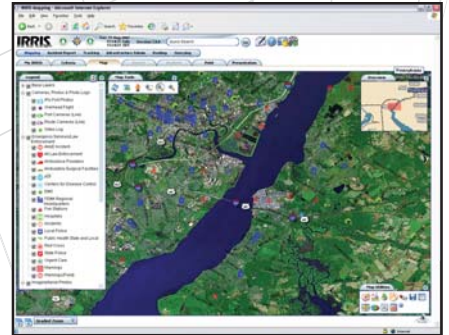
Delaware Valley Regional Planning Commission

For this project, GeoDecisions will develop a data model that will enable users to share transportation data in a secure environment. The firm will also recommend and implement geospatial applications that provide DVRPC with greater functionality and increased accessibility to relevant information.

DVRPC is responsible for comprehensive planning for the Philadelphia, Pa., metropolitan area. Providing DVRPC's member governments and transportation agencies with the tools to seamlessly share data files will help to facilitate better transportation planning, analysis, and decision making.

IRRIS® 7.0 OFFERS ENHANCED FEATURES AND FUNCTIONALITY

GeoDecisions is pleased to announce that IRRIS 7.0 – the latest version of this technology – will be released this fall. IRRIS is a Web-based portal used by U.S. military and homeland security agencies to rapidly deploy resources and equipment worldwide and respond to emergency and crisis situations. With many new features, IRRIS 7.0 includes a completely redesigned map viewer with added map preferences, a dockable legend so users can “dock” the legend anywhere on the screen, new tools to show shipment histories, customized news feeds, and the ability to add and remove map layers more quickly and easily.



CALIFORNIA GOES GREENER WITH NEW WEB SITE



The California Division of Recycling has chosen the team of GeoDecisions and NaviSite® to create a recycling Web portal. The spatially enabled Web portal, when complete, will provide a simple interface, allowing easier sharing and distributing of recycling

information to the public. In addition, the new portal will provide news updates and helpful hints on how to live a more 'green' lifestyle. NaviSite is a hosting service and content delivery firm.

ENSURING THE NATION'S FOOD SAFETY

GeoDecisions teamed with the International Document Solutions Network (IDSN) and other partners to form the Trace, Track, and Authenticate Systems Coalition Web site. The membership-based site was designed to assist the nation's agricultural regulators, food manufacturers, and other stakeholders in the food supply chain to adhere to current bioterrorism legislation and comply with private-sector and government agency standards, including food industry certifications and documentations. Future enhancements of



the site will incorporate GeoDecisions' award-winning geospatial tracking capabilities and alerting components to track food delivery and/or product recall.

DRIVING FORWARD WITH NEW TECHNOLOGY



The North Dakota Department of Transportation (NDDOT) and GeoDecisions deployed a spatial data portal and

Video Log Viewer to improve enterprise transportation information sharing and integration. The Web-enabled Video Log Viewer has enhanced the functionality of NDDOT's existing Image Log desktop application with new features, such as an integrated map interface and movie export. It was also designed as the foundation for NDDOT's Online Roadway Analysis and Mapping Portal (OnRAMP). This geospatial enterprise Web portal provides for seamless integration with other spatially enabled applications at NDDOT.

PERSONNEL NEWS

Welcome to Our Team

Crystal Collins (Newport News) – GIS Analyst
Andrew Laux (Harrisburg) – Developer
Gabe McMahan (Madison) – GIS Analyst
Jordan Parfitt (Harrisburg) – Developer

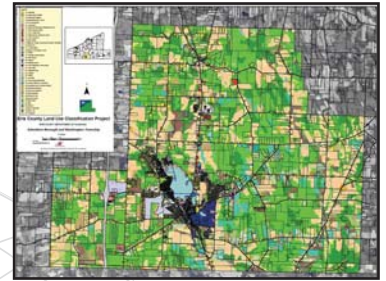
Mitchell Reisinger (Harrisburg) – Application Developer
Catherine Ryan (Baltimore) – GIS Analyst
Shane Whalen (Harrisburg) – Intern

Certification

Ali Detar (Harrisburg) – Certified Professional Services Marketer

ERIE COUNTY TO ENHANCE DECISION MAKING WITH KEY GIS LAYER

GeoDecisions will develop a tax parcel-based land use geographic information system (GIS) layer for Erie County, Pa. The land use delineation approach combines existing hydrology layers and assessment data with the county tax parcel base. Aerial photography is then used to delineate land use and land cover for each municipality in Erie County. The resulting GIS data will allow decision makers to determine the conservation or development potential of each property in the county.



TRAINING IN SAN ANTONIO

GeoDecisions partnered with its parent company, Gannett Fleming, to conduct two training sessions for Smithfield Foods, a national provider of pork, beef, and other foods. The training was held during Smithfield's annual conference in San Antonio, Texas, and focused on the effective use of the Web EMS (Environmental Management System) Manager. The Web EMS Manager



is a customized application that allows users to better manage data, documentation, audits, and corrective actions, as well as ensure consistent environmental compliance.



Austin, TX · Baltimore, MD · Camp Hill, PA · Columbus, OH · Harrisburg, PA
Jacksonville, FL · Madison, WI · New York, NY · Newark, DE · Newport News, VA
Philadelphia, PA · Pittsburgh, PA · South Plainfield, NJ · State College, PA
St. Louis, MO · Tampa, FL · Washington, DC

www.geodecisions.com

